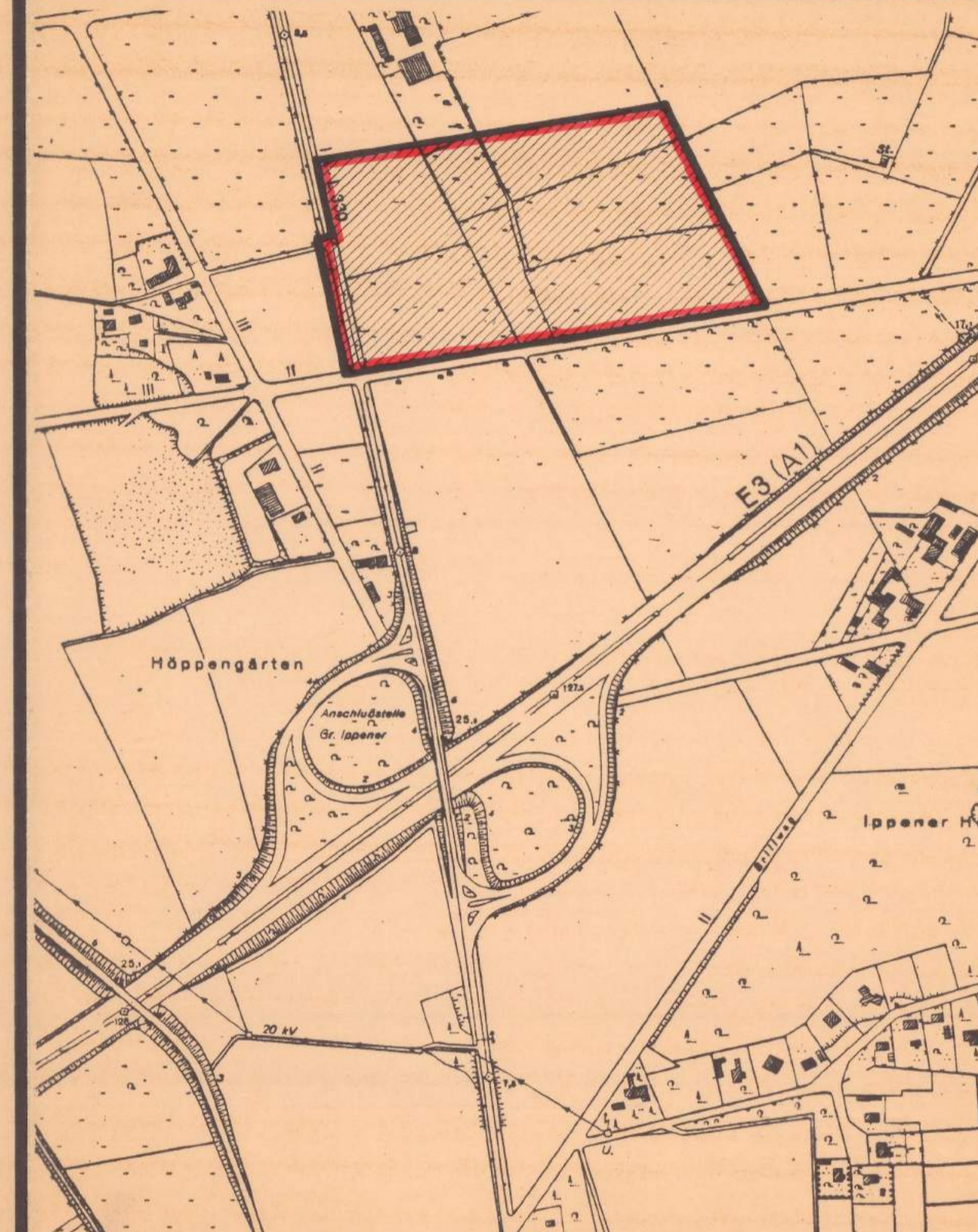


Groß Ippener
Gewerbegebiet III

zugleich Aufhebung für einen Teilbereich des Bebauungsplanes Nr. 5
„Gewerbegebiet Groß Ippener“



Übersichtsplan

Preamble text regarding the legal basis of the plan, including references to the Building Code (BauGB) and the Municipal Building Code (BauNVO).

Resolution text (Satzungsbeschluss) stating the council's decision to adopt the plan and its legal effect.

Plan preparation text (Planunterlage) detailing the technical specifications and data sources used in the plan.

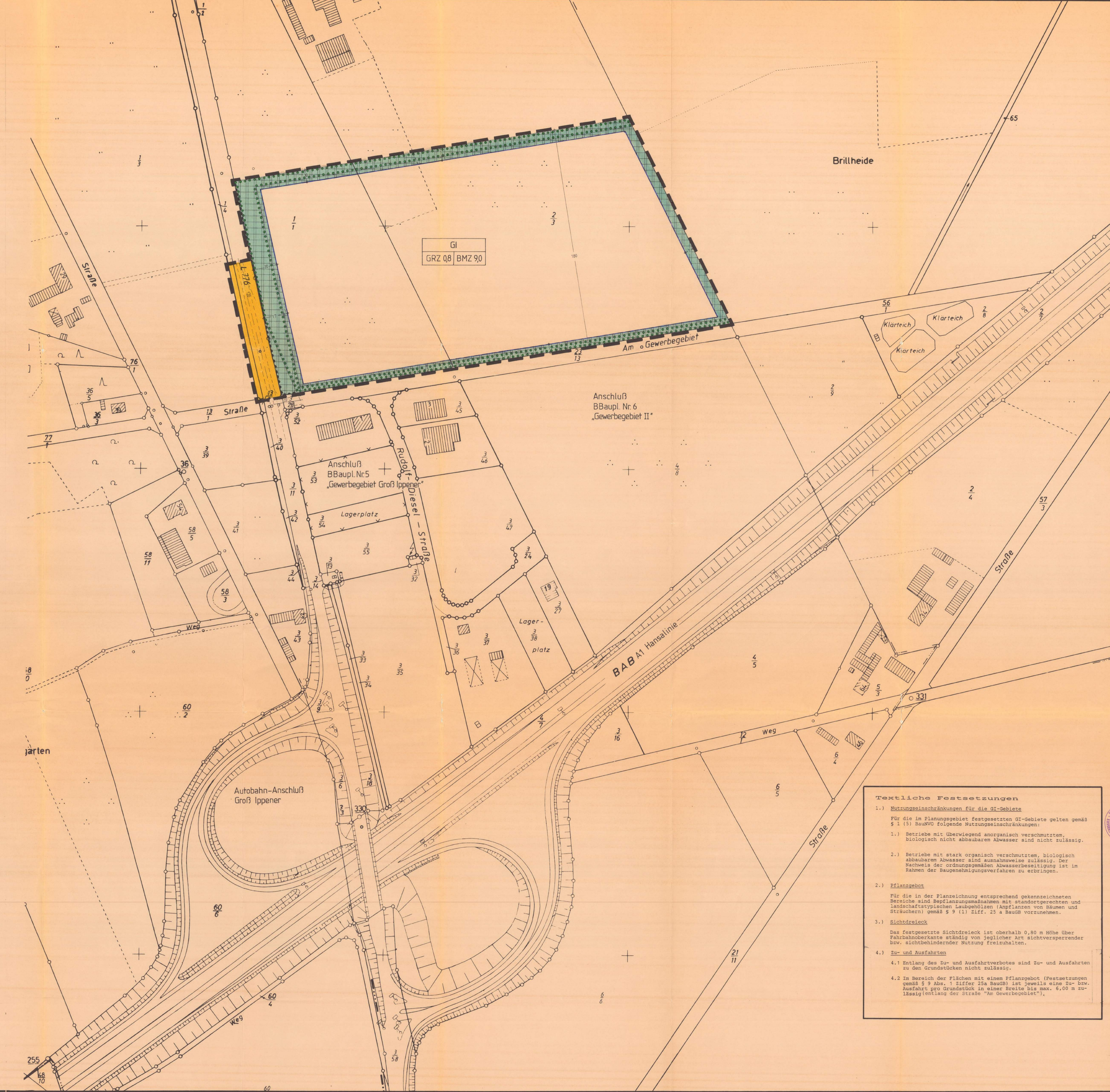
Public notice text (Anzeige nach BauGB) informing the public of the plan's adoption and the start of the objection period.

Official notice text (Öffentliche Auslegung) providing details on where and how the plan can be inspected.

Restricted participation text (Eingeschränkte Beteiligung) outlining the conditions for public participation in the planning process.

Final administrative text regarding the plan's implementation and the role of the planning authority.

Plan specification table (Planzeichnerklärung) with columns for 'Planzeichen' and 'Vermerk'. It lists various land use types such as residential, commercial, and industrial, along with their corresponding symbols and planning parameters like height and area.



Textliche Festsetzungen (Textual provisions) section containing specific rules for the GI area, such as restrictions on industrial operations and planting requirements.